



The Hinckley
SIXTH FORM

EST: 1629

26 / 27

COURSE GUIDE

VARIETY AND EXPERTISE

Create your perfect study programme

We offer a variety of traditional academic A Levels and alternative academic qualifications which you can mix to create a bespoke pathway tailored to your future. We will work with you to ensure your study programme suits your skills, interests and aspirations for the future.

Most of our students study three subjects. However, some, who have achieved high grades at GCSE and who would find it useful for their future plans, study four subjects from the start of Year 12. Whatever you choose, our expert team of subject specialists will support and guide you every step of the way.



26/27
COURSE LIST

BIOLOGY

BUSINESS

CHEMISTRY

COMPUTER SCIENCE

CRIMINOLOGY

DRAMA AND THEATRE

ENGINEERING

ENGLISH LITERATURE

FINE ART

FRENCH

GEOGRAPHY

HEALTH AND SOCIAL CARE

HISTORY

LINGUISTICS

MATHEMATICS

FURTHER MATHEMATICS

MEDIA STUDIES

MUSIC

PHOTOGRAPHY

PHYSICAL EDUCATION

PHYSICS

PSYCHOLOGY

SOCIOLOGY

SPORT

ENTRY REQUIREMENTS

Setting you up for success

Entry requirements are designed to help you succeed. That's why our entry requirements are in place - to ensure our students not only find success with us, but confidence, fun and fulfilment. With extensive experience in supporting the leap from GCSEs to A Level success, we ensure all our young people are matched with courses they will not only succeed in, but also love.

Our entry requirements are five GCSE passes at grades 5 to 9, including English and Maths. Most subjects also have additional entry requirements, designed to help you to choose courses that will suit your skills. Students who do not meet entry requirements on Results Day will be invited to attend our Clearing Clinic as they may be able to access some of our Level 3 courses.



APPLY NOW

Join our community

Applications to join The Hinckley Sixth Form 2026 cohort officially open on **Wednesday 12th November 2025**. To apply, visit our website - **www.thehinckleysixthform.co.uk** and complete the online form. Applications can also be submitted via **PS16**.

A member of our specialist team will then review your application before contacting you to arrange your interview where you may receive a Conditional Offer.

The closing date for online applications is **Thursday 26th February 2026**, however, places on our courses are limited and we encourage students to apply before **January 2026** where possible.

(All information in this guide was correct at the time of printing. The Hinckley Sixth Form reserves the right to close courses where low levels of interest mean the course is not viable.)

BIOLOGY

Exploring life's secrets through science

A Level Biology focuses on the detailed study of living things in the world around us. Biology students explore controversial scientific issues and examine how science contributes to our economy and our society. Biology combines well with other science subjects, as well as social sciences such as Psychology and Sociology. It is an important qualification for careers in science, including medicine, veterinary science and physiotherapy.

As the knowledge base in biological sciences grows exponentially and technology becomes ever more sophisticated, the ability to think broadly about biology and to apply your knowledge across many areas is a powerful asset both in scientific environments and in many other walks of life.

Our biology alumni have gone on to have amazing careers linked to their A Level, not just as medics

and vets, but in the fields of conservation, bioengineering, applied mathematics and many more.

Exam Board: OCR Biology A

Assessment: End of course examinations, and ongoing assessed practicals.

Subject Entry: General Hinckley Sixth Form entry requirements, plus a grade 6/6 in higher-tier Combined Science or a grade 6 in two single science GCSEs (including Biology). GCSE Maths grade 5.

Our scientists have gone on to study:

- Biomedical Science at the University of Lincoln
- Natural Science at the University of Cambridge



BUSINESS

Exploring how businesses grow and succeed

The A Level Business course introduces you to all you need to know about the internal and external business environment, providing a solid foundation for further study. With a focus on decision making, you'll learn essential leadership skills, alongside techniques to help you become an analytical problem solver capable of reaching clear judgments. These skills are all highly sought after and valued in a wide range of careers.

In Year 12, students will explore the key business functions: marketing, operations, finance and human resource management in the context of real business situations. This includes a specific focus on leadership and decision making - particularly the interdependent nature of decision making. In Year 13 students will go on to develop their understanding of strategic decision making processes undertaken by businesses across the globe.

The course prepares students for university

courses such as business, management, accountancy, marketing, economics and law. The skills and knowledge you gain are also transferable across a broad range of subjects and careers. Whatever you choose to do in the future, you'll find that the things you learn in this course will help.

Exam Board: AQA

Assessment: Three two-hour synoptic written exams taken at the end of the two year course.

Subject Entry: Minimum of grade 5 in GCSE Business (if taken); grade 5 or above in GCSE English.

Our former Business students have gone on to study:

- International Business and Marketing at the University of Leeds
- Politics and International Relations at Sheffield Hallam University
- Fashion Management at Nottingham Trent University
- Accounting with Business Management at De Montfort University
- Politics with International Relations at the University of York
- Policy, Politics and Economics at the University of Birmingham



CHEMISTRY

Uncovering what shapes our world

A Level Chemistry explores the material world and helps us explain everything from why a cake rises when placed in the oven to how plastics are made. Chemistry is at the forefront of responding to the needs of society, with chemists central to making advances in designing new materials, developing methods for more efficient energy use and discovering drugs, to name but a few.

Some topics within the A Level Chemistry course build on GCSE work, while some are completely new. The A Level Chemistry course includes the following topics:

- Physical Chemistry – kinetics and thermodynamics
- Inorganic Chemistry – the elements and how they react
- Organic Chemistry – carbon and the molecules made from carbon

Sometimes referred to as the ‘central science’, Chemistry combines well with Maths and other

science subjects requiring logical thinking skills and problem solving approaches, such as engineering. A Level Chemistry is an essential qualification for anyone aiming to study; medical-related degrees such as medicine, veterinary science, dentistry, pharmacy, chemical industry-related degrees, such as chemistry, chemical engineering and materials science, biotech-related degrees, such as biology and biochemistry and related courses such as forensics and geology. A sound chemical education also promotes powers of analytical thinking valuable to those seeking careers in areas such as law, accountancy, banking and journalism.

Exam Board: AQA

Assessment: End of course examinations, and ongoing assessed practicals.

Subject Entry: General Hinckley Sixth Form entry requirements, plus a grade 6/6 in higher-tier Combined Science or a grade 6 in two single science GCSEs (including Chemistry). GCSE Maths grade 6.

Our Class of 2025 destinations include:

- Biochemistry at Cardiff University

COMPUTER SCIENCE

Solving problems through code and logic

Computer Science is a practical subject, where you'll apply academic principles learned in the classroom to real-world computer systems. It is a creative subject that combines invention and excitement.

You'll focus on programming, extend your computational thinking and develop the skills to solve problems, design systems, and understand human and machine intelligence.

Computer Science works well with other logical and mathematical subjects, including sciences, Business, and Economics. It is an invaluable qualification for careers and university courses in the expanding world of IT, providing students with the IT and analytical skills valued by a wide range of employers and universities.

Our Sixth Form students have their very own computer suite based in the Sixth Form Centre, as well as access to an extensive range of Computer Science teaching rooms across our wider site.

Exam Board: OCR

Assessment: End-of-year exams and a coursework task in Year 13.

Subject Entry: GCSE Maths at grade 6 or above, GCSE Computer Science at grade 5 or above. (if taken)



COMPUTER SCIENCE PREPARES YOU FOR ADVANCEMENTS IN TECHNOLOGY AND FOR THOSE JOBS THAT DO NOT YET EXIST.

MRS STURGESS
HEAD OF COMPUTER SCIENCE



CRIMINOLOGY

Understanding crime, justice, and society

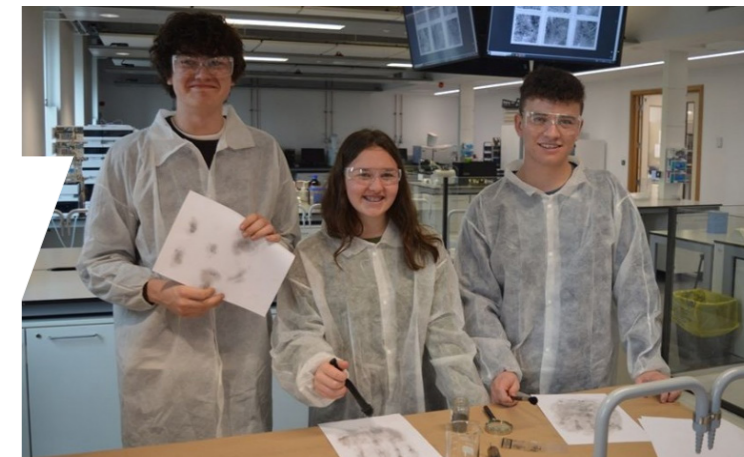
Criminology is a qualification that combines elements of Psychology, Law, and Sociology. Criminology is the scientific study of criminal behaviour, on individual, social, and natural levels, and how it can be managed, controlled and prevented.

The course enables students to use theories of criminality to analyse criminal situations and make recommendations for policy. Students also develop the knowledge and skills to research policy in practice, assess campaigns for changes in awareness, and examine information to review verdicts in criminal cases. The course is suited to students with enquiring minds, the ability to write a well-structured essay, and a willingness to study and think independently.

Exam Board: WJEC

Assessment: Examination and teacher-marked assessments in Year 12 and Year 13.

Subject Entry: General Hinckley Sixth Form entry requirements, plus grade 5 in GCSE English.



DRAMA & THEATRE

Masters of emotion, expression, and performance

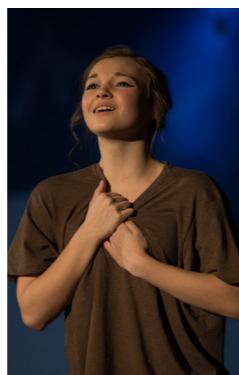
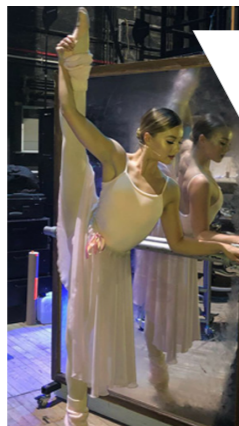
A Level Drama and Theatre is a fantastic opportunity to develop performance, design, and directorial skills, as well as gain an understanding of the theatre and the theory that underpins staging a play. You will be working collaboratively and practically putting theory into practice as you work towards performance or stage design projects. This course provides a balance of practical performing and reading, analysing, and acting from recognised texts and an appreciation of live theatre.

A Level Drama and Theatre offers an engaging and challenging route for anyone wanting to study performance at university or college, as well as opportunities to develop invaluable skills in communication, collaboration, and confidence for any future career or course of study.

Exam Board: Eduqas

Assessment: End-of-course written examination and school-based practical assessments.

Subject Entry: General Hinckley Sixth Form entry requirements. A GCSE qualification in Drama is preferable, but not essential.



I GRADUATED FROM BIRD COLLEGE CONSERVATOIRE OF DANCE AND MUSICAL THEATRE WITH A FIRST-CLASS DEGREE IN PROFESSIONAL DANCE AND MUSICAL THEATRE.

I BEGAN REHEARSALS FOR MY DREAM JOB, A YEAR CONTRACT TOURING ROUND THE THEATRES IN THE UK AS WELL AS INTERNATIONAL DATES IN ZURICH AND BERLIN.

- ALUMNI - REBECCA

ENGINEERING

Designing innovative solutions for a better future

Engineering is a skills-based course, that will challenge you to design for real-world scenarios and applications and to explore how Engineering impacts our world today. The course is designed to enhance your understanding of engineering practices, applications, and working routines within the industry.

Engineering works well with Science and Maths courses to prepare you for Engineering degrees at university or competitive higher-level apprenticeships. Its blend of theory and project-based learning means Engineering also combines well with other alternative qualifications. Our students benefit from the use of unrivalled facilities, including computer suites, laser cutter, woodwork, and metalwork machinery.

Our students have gone on to study Engineering across the country and take up exciting apprenticeship opportunities in vehicle, mechanical, and machine engineering, as well as in robotics and design.

Exam Board: Pearson

Assessment: A mix of exams and coursework.

Subject Entry: General Hinckley Sixth Form entry requirements, plus a grade 6 in a Science subject and grade 6 in GCSE Maths.

THE FUTURE STARTS WITH US

Our former Engineering students have gone on to study:

- Construction Project Management at the University of Plymouth
- Automotive Engineering at Loughborough University
- Aeronautical Engineering at Loughborough University

And secure impressive higher apprenticeship destinations such as:

- Prototype Apprenticeship at MIRA
- Apprenticeship at Arrow Precision Engineering

Where will studying Engineering at The Hinckley Sixth Form take you?



ENGLISH LITERATURE

Discovering worlds through words and imagination

If you love reading, discussing, and analysing a range of literary texts, A Level English Literature is for you. You'll be taken on a literary journey through history, examining writing from the Middle Ages to the Elizabethan period, from a Victorian novel to texts written in the 21st century.

The course covers everything from short poems to long narrative verse, Early Modern Drama to American plays, Modernist fiction and unseen poetry, as well as the fathers of English Literature: Chaucer and Shakespeare. You'll explore connections across these literary works, examining the contexts in which they were written and responding critically and creatively to their themes and ideas. Essay writing is a core skill, and you will learn how to craft an academic essay that draws on a range of interpretations of each text. A 'facilitating' subject, favoured by universities for a range of degree courses, English Literature is an important choice for careers in journalism,

teaching, public relations, media, politics, publishing, law, and more.

Exam Board: Eduqas

Assessment: End of course examinations and one coursework task.

Subject Entry: General Hinckley Sixth Form entry requirements, plus grade 5 in GCSE English Language AND Literature.



Regular theatre trips ignite the imagination

FINE ART

Transforming ideas into masterpieces

The course is designed to be fun, exciting and thought provoking. Art, Craft and Design encourages diverse ways of understanding, interpreting, evaluating, and feeling; supporting the development of a sense of individual and collective identity; increased social awareness and engagement and enhanced opportunities for vocational learning and subject-related careers.

Entering the qualification with confident technical drawing and painting ability, and an inquiring mind, tutors support students to research a chosen starting point, using critical understanding to analyse a broad range of contextual sources. Results will inform and justify the application of the visual language of art and design, which will include exploration of alternative materials, techniques, and processes.

During Year 12, students will explore the many disciplines of Art, Craft and Design and be introduced to a broad range of materials, processes, and techniques such as drawing

photography, visual communication, fashion & textiles, 3D Making and printmaking as an introduction to the subject. Students will then have the choice to build on their individual strengths and select their chosen area of study.

Course Title: Art, Craft & Design

Exam Board: AQA

Assessment: Coursework portfolio and an end-of-course examination.

Subject Entry: General Hinckley Sixth Form entry requirements, plus Merit at Art Level 2 or grade 5 in GCSE.

(Please note, all applicants will need to bring a portfolio of work as evidence of their interest and skills to their interview.)



FRENCH

Découvrez la culture du monde francophone à travers sa langue

A Level French will extend your understanding of French vocabulary and grammar, developing your ability to speak fluently. The course is based around a wide range of topical issues, revolving around culture in French-speaking countries, as well as the language.

French combines well with any other Sixth Form courses and opens the door for studying and working abroad in any industry. Studying a language is always a positive choice; it adds value to your other qualifications and gives you a real advantage in the world of work. You'll foster a range of transferable skills, including communication, critical thinking, research skills, and creativity - valuable to you and future employers.

Studying a language not only broadens your career prospects, it also opens doors to new cultures, exploration, and adventure.

Assessment: Listening, speaking and written exams.

Subject Entry: Grade 6 or above in GCSE French.

STUDYING A LANGUAGE CAN GIVE YOU AN EDGE OVER OTHER APPLICANTS FOR FUTURE JOBS AND OPPORTUNITIES. SPEAKING AN ADDITIONAL LANGUAGE OPENS DOORS - WHERE COULD IT TAKE YOU?

MS GARCIA | HEAD OF MFL

1629

GEOGRAPHY

Understanding our world

While studying A Level Geography you will have the opportunity to study three physical units (Carbon and Water Cycle, Hazards, and Deserts) and three human units (Changing Places, Globalisation and Global Governance and Population). Not only will each unit allow you to explore the ever-changing world, but connections between the different units allow you to develop a holistic understanding of Geography.

The physical units, making up 40% of the overall grade, provide an insight into the natural world. With the current focus on changes to global climates, the study of the Carbon and Water Cycle provides an understanding of why this occurs, with a strong focus on river and rainforest environments. As part of the Hazard unit, we analyse the impacts of natural events, understanding what causes various tectonic and weather hazards and why impacts vary between developing and developed countries. While the Deserts unit allows students to understand how deserts develop and how they are impacting

on life in various countries globally.

The human units, making up 40% of the overall grade, allow students to understand how we are impacting the planet. Urban areas are consistently changing, and creating different challenges for different cultures and societies. Changing Places provides students with an insight into what is changing in urban areas and why, using local, national, and international examples. Changing environments and political challenges in the developed, and developing world, mean our world needs to be governed to the best of our ability. Globalisation, and Global Governance allows students to understand what caused our world to be interconnected, how our planet is governed and what areas are most at risk. The Population unit focuses on how the world is changing regarding its demographics and what factors are influencing population structures around the world.

Coursework makes up 20% of the overall grade, giving students an opportunity to explore an environment in the UK and create their own investigation, providing an insight into one of the six units in more detail.

Geography at The Hinckley Sixth Form provides students with the opportunity to be independent thinkers and inspires those interested in how the world works, to focus on what is required to make our planet

sustainable and to discuss issues and challenge problems facing our planet.

Exam Board: AQA

Assessment: End of course examinations, including multiple choice and written answers, and coursework.

Subject Entry: General Hinckley Sixth Form entry requirements, plus grade 5 in Geography or another Humanities subject preferred.



HEALTH & SOCIAL CARE

Care, compassion and knowledge

Health and Social Care is an alternative academic qualification that relates to all aspects of health and social care in the UK. The programme prepares you to pursue a career in healthcare, social care, or childcare, giving you knowledge, understanding, and skills to prepare for employment or further study.

The qualification incorporates topics relevant across the health and social care sector:

- Human Lifespan Development
- Working in Health and Social Care
- Meeting Individual Care and Support Needs

Health and Social Care explores similar themes to social science subjects such as Psychology and Sociology, but with a vocational focus. After this qualification, students can progress directly into employment or onto higher study.

Exam Board: Pearson

Assessment: Coursework and examinations in both Year 12 and Year 13.

Subject Entry: General entry requirements.



I AM PASSIONATE ABOUT MY HEALTH AND SOCIAL CARE LESSONS. I HAVE LEARNT ABOUT A RANGE OF PROFESSIONALS AND ORGANISATIONS AND HOW THEY SUPPORT PEOPLE IN OUR COMMUNITY.

ALUMNI QUOTE



HISTORY

Learn lessons from the past to shape tomorrow

A Level History is an interesting and challenging subject that analyses change and continuity in human societies, helping students to develop an enquiring and analytical mind. During the course students study two units, complete one coursework assignment, and produce a historical investigation into the origins of the French Revolution.

'Industrialisation and the People: Britain, 1783-1885' is our breadth study. Through exploring social, economic, and political aspects of the age, the study aims to show how modern Britain was forged. For example, it examines developments in politics and foreign policy at a time when government was changing to become something we would largely recognise today, and encompasses protest movements to widen the franchise and covers the development of Irish nationalism. The coursework element centres around analysing historians' differing views of change or action, and deciding which are most convincing.

'The American Dream: Reality and Illusion 1945–1980' is our depth study. It covers the administrations of seven presidents, from Truman to Carter, and considers their impacts both domestically and abroad. This was a period of turmoil and change in the USA, from post-war recovery and boom, through the civil rights protests, and a foreign policy that sought to establish American values across the world. Students will look at key events like the Cuban Missile Crisis and the Vietnam War, alongside the growth of feminism and the Black Power movement.

Former Hinckley Sixth Form students have gone on to further study in areas such as History, Politics, and Law, including at Oxbridge Universities. The ability to communicate effectively both orally and in writing, is developed throughout the course and is useful for all further study routes and careers.

Exam Board: AQA

Assessment: End-of-course written examinations and a coursework essay.

Subject Entry: General Hinckley Sixth Form entry requirements, plus grade 5 in GCSE History, and grade 5 or above in English.

EST: 1629





LINGUISTICS

Understand how language evolves

A Level Linguistics takes you on a journey through language, from learning how we learn to communicate in infancy, to exploring how we use language as adults. You'll discover how factors such as gender and age impact our language choices, and study how we speak and write in a wide variety of contexts.

Language is constantly evolving, and you will learn how English has developed from the earliest forms of writing, through the Medieval and Early Modern periods, to the words and phrases we use today. We will explore how language is used in online forms of communication, looking at examples from diverse sources including social media, text messages, and email exchanges. You will become confident at analysing all the finer details of written and spoken texts and have a deeper understanding of how writers and editors use language to communicate.

English Language provides skills for any career that involves written communication and a confident grasp of the English language.

Successful linguists can enjoy a range of career opportunities in areas including the arts, the education sector, the media industry, law, politics – anything that requires fluent and confident communicators.

Exam Board: OCR

Assessment: End-of-course examinations and an independent coursework investigation.

Subject Entry: General Hinckley Sixth Form entry requirements, plus grade 5 in GCSE English Language AND Literature.

MATHEMATICS

Skills for a fast-paced world

Mathematics is a challenging and exciting course covering topics in pure mathematics, mechanics, and statistics.

You'll use and apply advanced mathematical techniques, learn to reason, interpret, and communicate ideas mathematically, and also develop skills in solving increasingly complex mathematical problems.

To fit a swiftly developing and fast-paced world, the course emphasises the use of IT and software to help solve problems.

Students will develop analytical skills, logic, and add in a bit of creativity, giving them a set of skills which make them desirable for any job or university course. Many of our Mathematics students also study Further Mathematics as a fourth course option, further enhancing their knowledge and setting them apart from similar applicants when looking at future destinations and maths-related careers.

Exam Board: AQA

Assessment: End-of-course examinations.

Subject Entry: General Hinckley Sixth Form entry requirements, plus grade 7 or above in GCSE Mathematics is advised, applications are considered with a grade 6.



THE SIXTH FORM HELPED ME MORE THAN I COULD HAVE EVER ASKED FOR, THEY HAVE MADE MY DREAMS POSSIBLE.

JACK | CLASS OF 2021

Jack graduated from our Sixth Form in 2021 having achieved three A*s, and was offered a place at the University of Oxford to study Mathematics. Jack praised staff for their support with entrance exams and interview preparation.

FURTHER MATHEMATICS

Explore the frontiers of mathematical thinking

Further Mathematics is an extension of the A Level Mathematics course, which can only be studied by those already doing A Level Mathematics. It is a challenging qualification, which extends and deepens your knowledge and understanding in the areas of mechanics, pure, and discrete mathematics.



The Hinckley Sixth Form has a strong reputation for supporting students to go on to study Maths at leading universities across the country, including numerous students who have accepted places to study at The University of Oxford.

Further Mathematics is offered as both a one-year AS and a two-year A Level. This course is recommended as a fourth A Level choice.

Exam Board: AQA

Assessment: Three exams at the end of Year 13 for A Level, or two at the end of Year 12 for AS.

Subject Entry: Grade 8 or above in GCSE Mathematics.

MEDIA STUDIES

Explore the ever-evolving global media landscape

How are groups of people represented to us in the media? Is it morally right to make a film out of tragic events? Can the media be blamed for violence in society? How far does the media control our thoughts about issues in the world today? This two-year course explores how media represents different groups, influences public opinion, and responds to global issues. Students examine both contemporary and historical media texts from the UK and beyond, including independent and non-mainstream productions.

Key topics include:

- Representation of people and events
- Ethical questions in media (e.g. portraying tragedy)
- Media's role in societal violence and shaping thought

Students will analyse a wide range of media industries and texts, study media theory and

alternative, and historical texts. During the course, students will develop critical thinking, research, and essay writing, practical skills in publishing, filmmaking, and editing, teamwork and personal reflection through discussions and coursework.

Career paths after studying Media Studies can include journalism, PR, marketing, publishing, and media development.

Exam Board: Eduqas

Assessment: A mixture of coursework tasks (30%) and examinations (70%).

Subject Entry: General Hinckley Sixth Form entry requirements, including grade 5 or above at GCSE English.

Our students enjoy international trips to destinations such as **New York** and **Disney Land Paris** to attend industry conferences and meet with leading industry professionals.



MUSIC

Championing creativity and expression

Our alternative qualification in Music is a practical, creative and academic course which allows you the freedom to steer your own direction of learning whilst studying musical conventions, performances and the music industry. This course has breadth and depth, developing your skills as a performer, composer and musician.

Practical tasks include solo and ensemble contexts, developing your skills in rehearsing to prepare for a big performance. Composition tasks can be completed on iMacs using Sibelius 7 or LogicPro, integrating technological skills. The academic tasks require you to research, analyse and evaluate your own work and specific musical concepts. These can be assessed as articles, interviews or presentations.

Music is an essential qualification for acceptance to a specialist performance programme at a music school or college or for anyone who wishes to pursue music as a career or a hobby.

Exam Board: Pearson

Assessment:

- Unit 6: Solo performance
- Unit 3: Ensemble performance
- Unit 1: Notation, theory and harmony
- Unit 2: Professional practice in the music industry

Within the two years, there will be a combination of articles, diaries, and written responses in exam conditions as well as recordings of performances, practice sessions, presentations, interviews, tutorials, and compositions.

Subject Entry: GCSE Music grade 4 pass or above and a keenness to perform on your instrument/perform vocals.



PHOTOGRAPHY

See the world through a new lens

The course is designed to be fun, exciting and thought provoking. Art, craft and design encourages diverse ways of understanding, interpreting, evaluating, and feeling; supporting the development of a sense of individual and collective identity; increased social awareness and engagement and enhanced opportunities for vocational learning and subject-related careers.

Entering the qualification with confident technical recording and editing skills and an inquiring mind, tutors support students to research a chosen starting point, using critical understanding to analyse a broad range of contextual sources. Results will inform and justify the application of the visual language of art and design, which will include exploration of alternative materials, techniques, and processes.

During Year 12, students will explore the many disciplines of Art, Craft and Design and be introduced to a broad range of materials, processes, and techniques such as drawing

photography, visual communication, fashion & textiles, 3D Making and printmaking as an introduction to the subject. Students will then have the choice to build on their individual strengths and select their chosen area of study.

Course Title: Art, Craft & Design

Exam Board: AQA

Assessment: Coursework portfolio and an end-of-course examination.

Subject Entry: General Hinckley Sixth Form entry requirements, plus Merit at Art Level 2 or grade 5 in GCSE.

(Please note, all applicants will need to bring a portfolio of work as evidence of their interest and skills to their interview.)

PHYSICAL EDUCATION

Unlock your potential

Through the Physical Education course, you will develop knowledge of both physiological and psychological theories within sport, as well as learning about the impact of sport on current and historical societal issues. You will study a range of topics, including the causes and treatment of sports injuries, how personality and anxiety affect performance, and how modern technology has impacted on 21st-century sport.

The A Level PE course is a progression from GCSE PE, with topics explored in more detail as you progress into Level 3 study. The course features three exams, and therefore course content can be defined into three distinct sections: Exercise Physiology - Including the muscular, cardiovascular, and respiratory systems, energy systems the body uses, and exercise at altitude / Psychology - Including theories of leadership, personality, and the impact of anxiety on athletes / Social & Cultural - Including the history of sport through to modern day, role of women in sport, media, and

commercialisation and global events.

Our students progress on to study Sports and Exercise Science, Sport Business Management, Sports Massage and Remedial Therapy, and Strength and Conditioning.

Exam Board: OCR

Assessment: One practical area of sport, including a verbal analysis and evaluation of performance, and a mixture of short-answer and essay-style exam questions in two end-of-course examinations.

Subject Entry Requirements: General Hinckley Sixth Form entry requirements, plus grade 5 or above in the GCSE PE theory paper or grade 5 in a GCSE Science.



PHYSICS

Discover the forces that shape our universe

A Level Physics enhances your understanding of the universe. It is a challenging, but inspiring course, ranging from the Newtonian concepts that govern the macroscopic world, down to the laws of Einstein that govern the microscopic.

You will further your knowledge in the topics of Kinematics, Electricity, Radioactivity, Simple Harmonic Motion, and Cosmology. Physics at A Level will provide you with the opportunity to link your mathematics knowledge directly to Physics concepts as evidence for their existence.

During your Physics lessons, you will be encouraged to 'think like a physicist'. This will involve designing and carrying out practicals in a professional manner to gather data. We will then ask you to critically analyse this data and use current theory to formulate conclusions. The many skills that you will develop in your Physics lessons - such as problem-solving, critical thinking, numerical, and communication—are transferable to a wide range of careers.

Studying Physics strengthens quantitative reasoning and problem solving skills that are valuable in careers in Physics and all other industries. Our alumni have gone on to further study in fields such as: Astrophysics, Architecture, Aeronautical Engineering, Veterinary Science, and even Town Planning.

You will undertake tasks in lessons individually and in groups, where you are encouraged to work with your peers to discuss and challenge ideas. During the course, you have the opportunity to research a specific area of Physics you are most interested in, and write a report demonstrating your understanding of the Physics concepts that underpin it.

Exam Board: OCR

Assessment: End-of-course examinations and ongoing practical assessments

Subject Entry Requirements: General Hinckley Sixth Form entry requirements, plus grade 6 in GCSE Maths. Minimum of 6/6 in Combined Science or grade 6 in two single science GCSEs, including Physics.

In 2025, students who studied Physics went on to study courses including: Physics at the University of Leicester and Physics with Astrophysics at the University of York.



**YOU WILL BE PREPARED
TO WORK ON FOREFRONT
IDEAS IN SCIENCE AND
TECHNOLOGY.**

**YOU CAN USE YOUR
UNDERSTANDING OF THE
UNIVERSE TO POSITIVELY
IMPACT THE WORLD FOR
FUTURE GENERATIONS.**

MR FAWKNER



PSYCHOLOGY

Understand minds, explore behaviour

Psychology is the scientific study of the human mind and behaviour. Ever wondered if prison really does change criminal behaviour? Or why some people conform? Or perhaps if the experiences you had before the age of five really do shape the person you are today? A Level Psychology aims to explore these questions through many different paradigms: biological, social, psychodynamic, evolutionary, cognitive, behavioural, and humanistic.

You'll tackle thought-provoking topics such as memory, social influence, schizophrenia, and forensic psychology. You will study a range of interesting research studies and consider the ethical issues involved in these. You will learn how to carry out a scientific research project, interpret statistics, and write a report. Studying Psychology at university can give you a whole host of exciting career options, including marketing, business development, accountancy, human resources, forensic psychology, occupational

therapy, clinical psychology, nursing, and teaching.

Course Modules:

- Attachment
- Memory
- Social Influence
- Psychopathology
- Research Methods
- Approaches
- Schizophrenia
- Forensic Psychology
- Issues and Debate
- Gender

Exam Board: AQA

Assessment: End-of-course examinations.

Subject Entry: General Hinckley Sixth Form entry requirements, including grade 5 in GCSE English and Maths. A higher pass grade in English is an advantage.



SOCIOLOGY

Explore society, understand change

A Level Sociology involves studying human social life, groups, and societies in a systematic way. Sociologists investigate and attempt to explain the social world and our behaviour in it.

They are particularly interested in understanding the ways in which society influences us and shapes our daily lives. However, be prepared to be challenged: sociologists fundamentally disagree on nearly every issue, and the subject is characterised by intensive debate and competing perspectives.

The course encourages you to develop a strong understanding of contemporary issues and debates. It is a good choice for a wide range of career and university routes, developing widely recognised skills: critical thinking, research skills and a sound understanding of the society we live in.

The modules students will study during the Sociology course are: education, culture and identity, theory and methods, crime and deviance, beliefs in society, and debate, analyse, and

understand.

Exam Board: AQA

Assessment: End-of-course examinations.

Subject Entry: General Hinckley Sixth Form entry requirements including grade 5 in GCSE English.



BTEC LEVEL 3 NATIONAL DIPLOMA IN SPORT

Giving athletes the platform for success

New for 2026, this course forms part of our Elite Sporting Pathway and has been introduced to allow our wealth of local athletes the benefit of being taught by subject experts in an environment with a strong sporting legacy and commitment to excellence.

COURSE PATHWAYS

At The Hinckley Sixth Form, the BTEC Level 3 National Diploma in Sport can be studied in two ways:

- **Extended Diploma**

This is equivalent to studying 3 A Levels, allowing students to solely focus on participation in our Elite Sporting Pathway. Students on this pathway will not study any additional Level 3 courses alongside their BTEC Level 3 National Diploma.

- *or* **Double Award**

The double award is best suited to students who would like to combine their passion for sport alongside broadening their knowledge with a supplementary Level 3 course.

This course is equivalent to 2 A Levels, and is a blended offer allowing students to study one further Level 3 qualification, such as one of our A Level subjects.

Due to its foundation of heavily practical units, BTEC Level 3 National Diploma in Sport is well suited to learners who are passionate about excelling in practical sport as part of their studies, alongside written elements. The course is open to students from any sporting background, including netball, football, basketball, and rugby.

COURSE CONTENT

During this course you will undertake mandatory units, and some optional units which will be based around practical activity which will allow you to choose a specific specialist area in which you wish to develop, or continue on a broad programme.

Topics you will study on this course include:

- Anatomy and Physiology
- Fitness Training and Programming for Health, Sport and Well-being (practical and written)
- Professional Development in the Sports Industry
- Sports Leadership (practical and written)

- Investigating Business in the Sport and Active Leisure Industry
- Skill Acquisition in Sport
- Coaching for Performance (practical and written)
- Sport Event Organisation

WIDER OPPORTUNITIES

In addition to our strong local sporting links with Hinckley Rugby Football Club, The Futures Trust has well established links with Coventry Football Partnership: Sky Blues in the Community and Coventry Rugby Club. As a proud member of The Futures Trust, students benefit from a wide variety of competitive sporting enrichment, with fixtures against other trust sixth forms, as well as local providers in a variety of sports.

Students studying BTEC Level 3 National Diploma in Sport will have the opportunity to visit Loughborough University, where they will have the chance to experience a day in one of the UK's leading higher education institutions. World renowned as a centre of sporting and academic excellence, students are given the opportunity to view elite sporting facilities, and gain an insight into university life and what it means to be a university student.

PROGRESSION OPPORTUNITIES

As well as supporting students who aspire to build

careers as professional athletes, after successfully completing the BTEC sport course, students will be able to progress on to higher education on full degree single or combined courses, for example:

- BA (Hons) in Sports Development and Management
- BSc (Hons) in Sports Management / Coaching
- BSc (Hons) Sports Business Management
- BSc (Hons) Sport and Leisure Management

Exam Board: Pearson

Assessment:

Extended Diploma: Four externally accessed exams over the two years and around 70% internally assessed coursework.

Double Award: Three externally accessed exams over the two years and around 70% internally assessed coursework.

Subject Entry: General Hinckley Sixth Form entry requirements of five GCSE passes at grades 5 to 9, including English and Maths. Students who do not meet entry requirements on Results Day will be invited to attend our Clearing Clinic, as they may still be suitable to study the BTEC National Diploma.

(All information was correct at the time of printing. The Hinckley Sixth Form reserves the right to close courses where low levels of interest mean the course is not viable.)



APPLY NOW

Join our vibrant student community
www.thehinckleysixthform.co.uk

THE FUTURE STARTS WITH US



The Hinckley
SIXTH FORM

www.thehinckleysixthform.co.uk

01455 632183 / office@thehinckleyschool.co.uk / The Hinckley Sixth Form, Butt Lane, Hinckley, Leicestershire, LE10 1LE