

# Welcome



## The Hinckley SIXTH FORM

### Your Brighter Future Starts Here

The Hinckley Sixth Form is an educational community that promises high quality outcomes and experiences for all of our students. We have the highest aspirations and guarantee the best possible academic experience, combined with exciting enrichment opportunities. **At The Hinckley Sixth Form we put students first to ensure that each and every individual is well prepared for their onward destination**, be that university, employment or a high level apprenticeship, thanks to impressive exam results and a skill set developed to support their journey through our ever-changing world.

**We thrive on supporting our students' aspirations and constantly aim to inspire, challenge and support them as they chase their dreams.** Our students enjoy creating a personal programme of study, choosing from a wide variety of A Level and BTEC courses, all led by experienced subject specialists, including staff who are highly regarded nationally for their work within education, hold doctorates in their fields or have gained prestigious qualifications from leading universities.

With their own hard work and the commitment of our team, year after year our students achieve amazing things. For example, **in 2022 we were once again proud to congratulate 26% of our The Hinckley Sixth Form students as they were awarded places to study at prestigious Russell Group Universities.** Our alumni include a long list of University graduates and professionals who are now leading the way in sectors such as medicine, law, engineering and the arts.

Here at The Hinckley Sixth Form we pride ourselves on our welcoming and warm approach and our experienced Post 16 team get to know all our students on a personal level so **no-one gets lost in the crowd.** This way we can ensure that we give students the tailored support and opportunities they need to reach their goals. After all, our team are experts in supporting the transition from GCSE to Sixth Form, so who better to help you take your next steps.

We hope that our prospectus gives you a real insight into the **unrivalled support and opportunities** The Hinckley Sixth Form has to offer and showcases the wide range of courses that our students find success in year after year. With our transfer to The Futures Trust and ongoing **extensive investment in our Post-16 and wider site facilities**, there truly has never been a better time to join our sixth form community.

If you have a specific query or would just like to talk about your application with a member of our specialist team, please do not hesitate to get in touch - our experienced team are always on hand to help.

The specialist post-16 team here at The Hinckley Sixth Form look forward to meeting you and your family soon.



Danni Solly,  
Director of Post-16

Lisa Hickman,  
Head of School

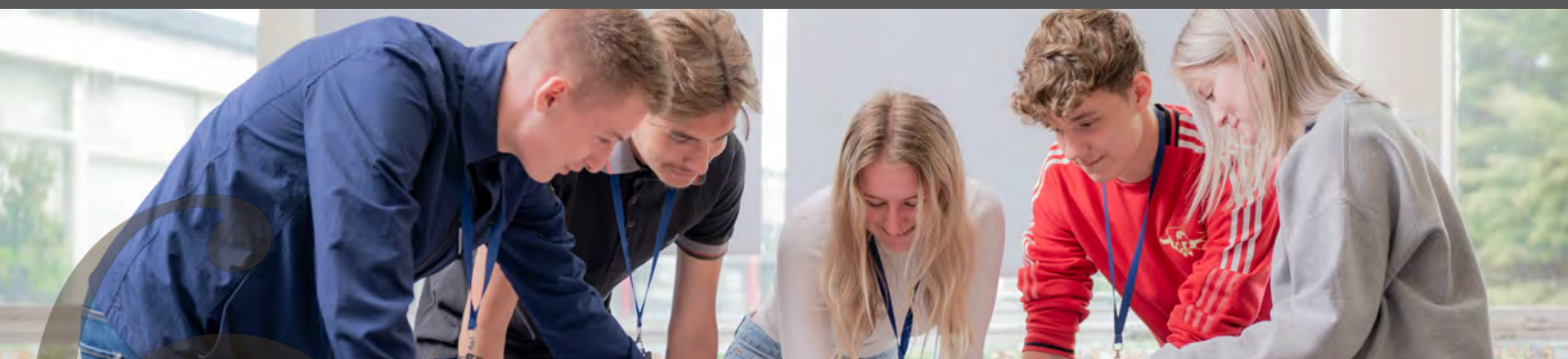


On average at The Hinckley Sixth Form...



84% of **History** students achieve top grades **A\*-B**

71% of **Drama** students achieve top grades **A\* - B**



71% of **Business Studies** students  
achieve top grades **A\*-B**

76% of **Criminology** students achieve top grades **A\*-B**





# Student Success



3 students were awarded offers  
from **The University  
of Oxford** (2021)

Students join our Sixth Form because they aspire to greater choices and opportunities in the future. We work hard to make sure that at The Hinckley Sixth Form you are able to succeed in those aspirations.

Our students have once again secured outstanding destinations, including a high proportion securing offers to study at prestigious Russell Group Universities. Students will now go on to study a wide variety of degree courses across the country including Medicine, Bioengineering, and Law, with many students also securing places on competitive apprenticeships with leading employers such as JCB and Lloyds of London. Every year our students are able to accept places on prestigious degree apprenticeships, move to leading universities or accept roles within industry. **The Hinckley Sixth Form is your stepping stone to success.**

Outstanding enrichment opportunities mean that at The Hinckley Sixth Form we give our students additional platforms for success. Students have won national awards for achievement in science and engineering at The Big Bang Fair, been recognised by royalty for their Duke of Edinburgh Award achievements and been mentored by leading professionals through our Career Ready scheme.

We also understand that it is not just previous performance that impacts results, but behaviours too, that is why our students take part in the **VESPA Mindset Programme**, to explore Vision, Effort, Systems, Practice and Attitude in their journey to success.

Unique opportunities for  
success set our students apart



The Hinckley  
SIXTH FORM

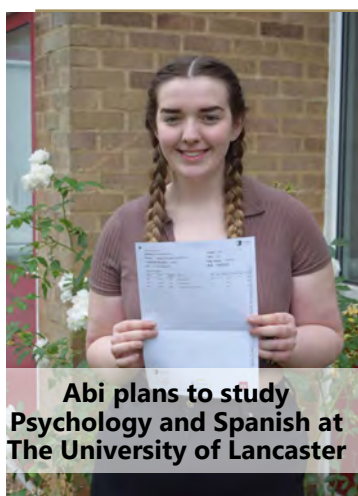




**The Hinckley  
SIXTH FORM**

## *- The Class of 2022 -* **Celebrate A Level Success**

Hinckley Sixth Form students celebrated in August following yet another year of excellent A Level and Level 3 BTEC results at The Hinckley Sixth Form. Our students have once again secured outstanding destinations including a high proportion securing offers to study at prestigious Russell Group Universities. Students will now go on to study a wide variety of degree courses across the country including Medicine, Bioengineering, and Law, with many students also securing places on competitive apprenticeships with leading employers such as JCB and Lloyds of London.



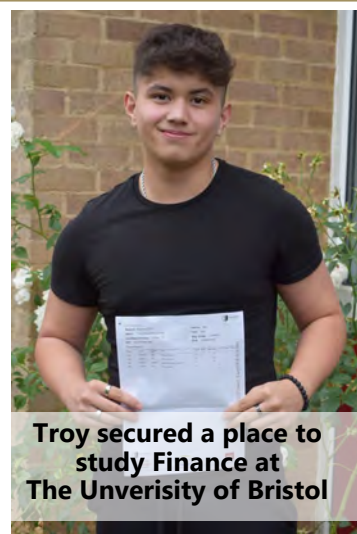
**Abi plans to study  
Psychology and Spanish at  
The University of Lancaster**

One Hinckley Sixth Form student now preparing for university life is Abi, after celebrating an impressive 3 A\*s in Business, Psychology and Spanish. Abi is now looking forward to studying Psychology and Spanish at her first-choice university, The University of Lancaster, after a gap year. Abi shared how support from staff and mock exams helped her to feel calm during the exam period and called results day, 'bitter-sweet', as she is sad to leave the sixth form, but excited for the next challenge.

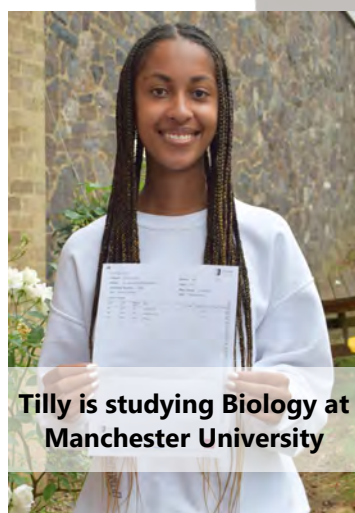
Celebrating with Abi was Troy, who achieving 2 A\*s in Maths and the Extended Project Qualification and 2 As in Further Maths and Chemistry, Troy is excited to have secured a place to study Finance at The University of Bristol. Having also studied for his GCSE's at The Hinckley School, Troy has now

completed a seven-year journey at the school and said, "I am so glad that I did all seven years here, it was a smooth transition all the way. I was really comfortable with my teachers who were always happy to help." Troy now aspires to have a career in Investment Banking or Finance Consultancy.

Tilly and Millie both celebrated an impressive set of results by both achieving 1 A\* and 2 As Tilly, who was joined to celebrate by her sister and her mum, shared how happy she was with her success. Now moving onto study Biology at her 1<sup>st</sup> choice university, Manchester University, Tilly said, "I am so glad I chose to study here, it was so easy to make friends and there are great teachers." While friend Millie shared how happy she was with her results and how staff supported her success during challenging times, "Lockdown made me work twice as hard and small class sizes mean we all have great close working relationships with staff and feel like a community."



**Troy secured a place to  
study Finance at  
The University of Bristol**



**Tilly is studying Biology at  
Manchester University**

Headteacher Lisa Hickman said, "We feel incredibly proud of the achievements of the Class of 2022. This year group has faced many post Covid challenges, yet have approached their studies with tenacity and determination. We are excited to see so many students gain their first-choice places and go on to study a wide variety of subjects. We thank them for their contribution to college life and wish them all the best for the future."



**Millie will study Biology  
after a Gap Year**



# Careers and Employability

At The Hinckley Sixth Form you will receive **tailored careers guidance from an accredited professional** and work with a wider team of experts with strong links to leading professionals, businesses and universities. At The Hinckley Sixth Form we pride ourselves on ensuring our students don't just leave us with excellent results, but also the confidence, direction and connections to pursue their dream career.

*Aspirational careers advice to support the next generation of industry leaders*

Our on-site Careers Officer works with students on a one-to-one and group basis to offer guidance and advice, as well as supporting students to secure industry placements. All the Hinckley Sixth Form students also get the opportunity to attend employability workshops, motivational talks, careers fairs, taster lectures and tours at leading universities across the country, ensuring that there is no ceiling on their future plans.

**Strong links with national businesses, universities and even motivational speakers mean that The Hinckley Sixth Form students benefit from unrivalled guidance.**

These links mean that students regularly leave us with a guaranteed job within industry, invaluable work experience, prepared for university life and with the confidence to pursue their dreams.



*Opportunities that open doors*



**Geosynthetics**

## EMPLOYER PARTNER TESTIMONIAL

*"The work we do with The Hinckley Sixth Form, particularly through the Career Ready programme, is a win for all involved and I am delighted to say that we have gone on to employ a number of students directly, through apprenticeships or engineering internships, and the students have become important and valued members of our team."*

**Chris Foxton the Chairman and Owner of Geosynthetics Ltd**

"Geosynthetics Ltd have supported students at The Hinckley Sixth Form through our Career Ready partnership for the last seven years and have been delighted to do so. We provide help and guidance through mentoring, internships, workplace visits and masterclass presentations. Additionally, we are pleased to say that as a result of these links the first three recipients of our Student Development Award were students from The Hinckley Sixth Form."

"Everyone in the company gets involved in one way or another and all take pleasure in passing on knowledge and experience. Watching students grow and develop their careers is extremely rewarding."



**The Hinckley  
SIXTH FORM**





We support our  
students to  
become confident  
leaders



# Student Life



The Hinckley Sixth Form students have a **dedicated Post 16 building**, with their own cafe, study areas, teaching rooms, kitchen, meeting room, laptops and free Wi-Fi. The building is not used by any other students and gives Year 12 and 13 a mature base with all the tools to support them through their time at The Hinckley Sixth Form. **Our wider site also boasts enviable facilities for students to enjoy**, these include purpose built drama and dance studios, computer suites, science labs, photography studio, dark room, sports hall and both Astro turf and grass sports pitches.

*"A friendly environment where everyone gets along"*

*"The Hinckley Sixth Form has a welcoming and relaxed atmosphere. You are treated like an adult"*

*- Quotes from Hinckley Sixth Form students*

Our students get more than just an education, from seminars and interactive workshops with leading motivational speakers, to sports teams and unforgettable social events, Hinckley Sixth Form students don't just get amazing results, they leave with **life-long memories** too.

Student voice and leadership is at the forefront of the extra-curricular offer. By joining the Sixth Form Leadership Team students play a pivotal role in improving The Hinckley Sixth Form and the wider school community. They co-ordinate individual and subject-based **mentoring, charity work, reading skills, environmental work, publicity, whole-school student voice, equality groups** and much more. Their work helps to shape the inclusive and supportive culture within our community making everyone feel welcome, included and celebrated.

Hinckley Sixth Form students benefit from studying in a **fantastic location**, as our campus is located close to Hinckley town centre with bus and train stations, leisure centre, library, cafés, supermarkets and shopping and research opportunities within walking distance. Our location means we are easily accessible by foot, public transport, bike or car.



The Hinckley  
SIXTH FORM



# Health and Well-Being

At The Hinckley Sixth Form we pride ourselves on our outstanding student support and care about getting to know all students as individuals - no one gets lost in the crowd.

Our size means a personal and unique approach to learning, with each student receiving the time and commitment they deserve. Everyone knows your name and the Leadership Team take a close interest in students' progress and well-being, offering additional tailored support and guidance as well as mentoring and leadership opportunities.

## Health and Well-Being

With access to a dedicated Well-Being Support Team, purpose built Health and Well-Being Suite, nurse visits, anxiety workshops, personal tutors and professional counsellors, our team help to ensure that all Hinckley Sixth Form students flourish. Regular well-being events featuring guest speakers, alumni, and activities such as yoga, team sports and arts and crafts help The Hinckley Sixth Form to teach students resilience, mindfulness and how to look after their mental and physical well-being.



## Environment

Our dedicated Post 16 centre is a welcoming and supportive environment that is only used by sixth form students. It provides a variety of settings for students to study including a large study centre, sofa area and classrooms with computers. Students are able to work in supported group sessions, as well as completing independent learning and home study - we offer the perfect combination of support and independence to help you grow.

## SEND

We provide specialist SEND support. From designing structured support plans to designated 'quiet' working spaces for students with additional needs, we take the time to understand our students and listen to those close to them, creating a Post 16 journey tailored to each student.



## Tutors

All students are assigned a tutor who will be a daily point of contact throughout their Post 16 journey to support their progress. Tutors work with students to support their academic progress and well-being, having regular 1-2-1 mentor meetings to check in and offer additional support.



# Additional Opportunities



## Outstanding Opportunities that Pave the Way to Success

At The Hinckley Sixth Form we have developed an exceptional programme of life enhancing enrichment experiences which ensure that our students have the time of their lives in Sixth Form, whilst developing life skills that give them a real edge when they leave us.

The Hinckley Sixth Form enrichment programme focuses on building skills that are highly sought after by employers and higher education providers and which enrich any university personal statement and CV:

- **Independence**
- **Leadership Skills**
- **Public Speaking**
- **Planning and Organisation**
- **Teamwork**
- **Competitiveness**
- **Service to Society**
- **Moral and Ethical Reflection**

The additional opportunities open to our students include:

- **Regular study visits**, from explorative field work in Geography and visiting galleries in Art, to investigating a crime at a University Forensics Day.
- **Performing Arts showcases**, including music recitals and large scale musicals. Students enjoy rehearsing and performing in our purpose built drama studio, dance studio and stage.
- Supporting younger students by joining our **mentoring** programme.
- Organising annual The Hinckley Sixth Form **charity events**.
- **Student Leadership Programme**.



The Hinckley  
SIXTH FORM





- A highly acclaimed and well established **Duke of Edinburgh's Award** programme.
- **Hustings and debates** with local politicians.
- Building character and friendships as part of a Sixth Form **sports team**. Coached by expert staff, teams have included Netball, Basketball and Rugby, however our specialist staff are always open to starting new teams based on your interests!
- Joining the **Career Ready** Programme to connect with a leading industry mentor
- Taking part in **community volunteering**. Last year students enjoyed supporting members of the community at local care homes, Hinckley Parks and Dorothy Goodman.



**We are currently the only school in Leicestershire to offer the full Year 12 Career Ready programme!**

Career Ready introduces students to a valuable network of business links through a series of guest speakers, industry mentors, off site visits and employability workshops.

Year after year our students tell us how invaluable their time on the Career Ready programme was and students even have a history of securing internships and jobs for the businesses they work with.



*In 2019 our Career Ready students enjoyed a Capital Experience in London, including a workshop at the LinkedIn UK.*



# Extended Project Qualification

**In addition to A Level and BTEC Level 3 qualifications, The Hinckley Sixth Form offers students the option to secure the Extended Project Qualification (EPQ). EPQ students gain an additional qualification that has its own UCAS point value.**

Our experience shows that securing the EPQ gives our students a real advantage when applying for top universities who regard its independent study element highly. Because our students undertake their own research and project work as part of the EPQ, it allows them freedom to explore a particular topic in greater depth. This provides our students with an excellent talking point at interviews for both apprenticeships and university.

Completing an Extended Project Qualification allows The Hinckley Sixth Form students to further develop:

- Critical thinking
- Independent learning
- Research practices
- Harvard Referencing skills
- Public speaking and presentation experience
- Essay writing - in preparation for university dissertations

*Hinckley Sixth Form students who aspire to attend Oxbridge or any Russell Group Universities receive expert tailored support, including interview preparation, personal statement workshops and entry exam coaching from experienced professionals, including teachers who studied at Oxbridge themselves.*



## Off to Oxford!

Caitlin achieved an A\* in her EPQ and secured a place to study Experimental Psychology at Oxford University (2020)



We have the highest  
aspirations for our  
students and  
continually watch  
them succeed



# Alumni Stories

We help our students to turn their aspirations into reality, from gaining a degree from a top university, to jumping straight into a role within industry - **Hinckley Sixth Form students achieve their dreams.**

**GEORGIE** - *Hinckley Sixth Form Alumni*

## ***First in History from The University of Cambridge***

“ The teachers and staff at Hinckley Sixth Form helped me to realise my dream of studying at Oxbridge. They not only showed me that it was possible, but provided individual support and detailed guidance to get me there.

”



**RHYS** - *Class of 2020*

## ***Degree Apprenticeship with Price Waterhouse Coopers***

“ I have loved my time at The Hinckley Sixth Form. All the staff are extremely helpful, whether you need help with revision or just someone to talk to, they are always there. Teachers have played a big part in helping me achieve these results, they really made me focus on my studies at the beginning of Year 13. I'm sure anyone else would really love studying here as much as I have!

”



# ISAAC - Class of 2016

## HMRC Graduate Programme



“ The transfer from my high school to The Hinckley Sixth Form was seamless, thanks to the welcoming atmosphere of the college.

My A Level results were one A\* and 3As -these were a **testament to the high quality of teaching across all subjects**, as well as all of the support and encouragement I received.

My experience of A Level Maths and Further Maths **inspired me** to continue my studies in this field, and the high quality of teaching allowed me to attain the entry requirements for the university of my choice. I now have a **First Class degree in Maths from the University of Birmingham** and my next step is starting a career in the civil service, which I begin in November. **I was fortunate enough**

**to gain a place on one of the HMRC graduate programmes.** I have also recently volunteered at The Hinckley Sixth Form, supporting Year 12 and 13 Maths students.

To prospective students, **I cannot imagine a better place to study.** The school provided, through an amalgamation of **brilliant student support and high standards of teaching**, everything I needed in order to get to where I wanted to be.”

”



The Hinckley  
SIXTH FORM





# Course List - 2023/24

At The Hinckley Sixth Form we offer a wide variety of BTEC and A Level courses which students can mix to create a bespoke pathway tailored to their future. We will work with you to ensure your study programme suits your skills, interests and aspirations for the future.

## Entry Requirements

**Our entry requirements are five GCSE passes at grade 5 to 9, including English and Maths.**

Most subjects also have additional entry requirements, there to help you to choose subjects that will suit your skills.

Students achieving five passes at grade 4 or above, including English and / or Maths can access some of our Level 3 courses.

## Subject Choices

**Most students study three A Level or BTEC Level 3 subjects. However some, who have achieved high grades at GCSE and who would find it useful for their future plans, study four subjects from the start of Year 12.** Our expert team will work with you to ensure that your subjects are the best fit for your future.

*Don't forget that you can mix A Level and BTEC courses to create your own personalised pathway.*

**Don't limit yourself by only studying one course!**

At The Hinckley Sixth Form some students start Sixth Form knowing exactly what industry they want to work in, while others use their two years to develop a career plan. Which ever applies to you, having the opportunity to combine up to four courses and being awarded multiple qualifications can give you the edge when it comes to applications!

## The Hinckley Sixth Form Course List 2022/23

**Art**

**Biology**

**Business**

**Chemistry**

**Computer Science**

**Criminology**

**Drama and Theatre**

**Engineering BTEC**

**English Language**

**English Literature**

**Geography**

**Health & Social Care BTEC**

**History**

**Information Technology BTEC**

**Mathematics**

**Further Mathematics**

**Media Studies**

**Music BTEC**

**Photography**

**Physical Education**

**Physics**

**Psychology**

**Sociology**

**Spanish**

**Uniformed Protective Services  
BTEC**

# Art



*Experiment to Develop a Unique Artistic Style*

**A Level Art** is a practical, creative subject, which enables you to apply a wide range of artistic techniques and develop your own creativity.

You'll be encouraged to experiment with a range of resources, media and materials, ultimately building a personal style and a broad portfolio of work.

Art and Photography share a creative curriculum in Year 12, when students explore and develop a broad range of creative skills. In Year 13 you specialise, working with a tutor to further develop your own distinctive style.



**Exam Board:** AQA

**Assessment:** Coursework portfolio and an end of course examination.

**Subject Entry:** General Hinckley Sixth Form entry requirements, plus Merit at Art Level 2 or 5 for GCSE.

Please note, if you've not studied Art at Level 2 you'll need to submit a portfolio of work as evidence of your interest and skills.



**SCAN ME...**

to explore the exam board specification

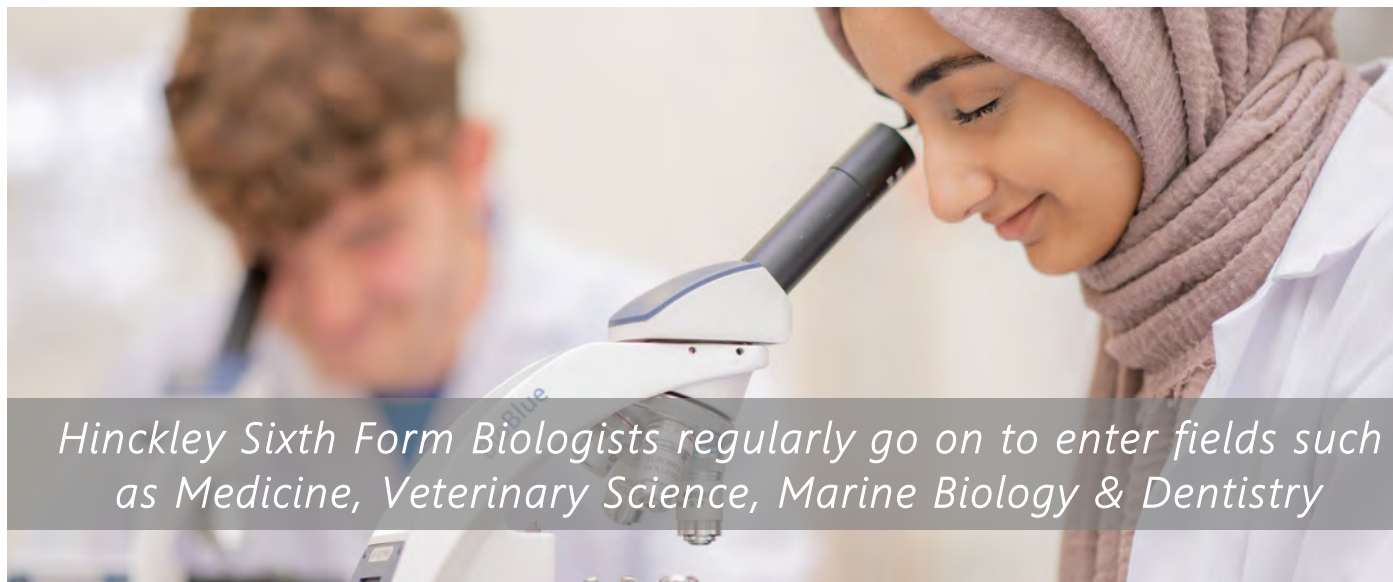


The Hinckley  
SIXTH FORM





# Biology



*Hinckley Sixth Form Biologists regularly go on to enter fields such as Medicine, Veterinary Science, Marine Biology & Dentistry*

A Level Biology focuses on the detailed study of living things in the world around us. Biology students consider controversial scientific issues and look at how science contributes to our economy and our society.

Biology combines well with other science subjects, as well as social sciences such as Psychology and Sociology. It is an important qualification for careers in science, including medicine, veterinary science and physiotherapy.

As the knowledge base in biological sciences grows exponentially and technology becomes ever more sophisticated, the ability to think broadly about biology and to apply your knowledge across many areas is a powerful asset both in scientific environments and in many other walks of life. Our biology alumni have gone on to have amazing careers linked to their A Level, not just as medics and vets, but in the fields of conservation, bioengineering, applied mathematics and many more.

**Exam Board:** OCR Biology A

**Assessment:** End of course examinations, and ongoing assessed practicals.

**Subject Entry:** General Hinckley Sixth Form entry requirements, plus 6/6 in higher tier Combined Science or 6 in two single science GCSEs, including Biology. GCSE Maths grade 5.

## Alumni Story

### JAMES - Dentistry

James studied Biology, Chemistry, Maths and Psychology at The Hinckley Sixth Form and always had the ambition to become a dentist. James has gone on to ....



- Receive a BSc Hons in Biomedical Materials Science from the University of Manchester in 2011
- Conduct research as part of his dissertation which was published with James as first author
- 2012-2016 - Graduate entry dentistry at University of Central Lancashire
- In 2016 James won the Royal College of Surgeons Edinburgh UK undergraduate dental skills competition
- In 2020 he passed his exams to become a Member of the Faculty of Dental Surgery at Royal College of Surgeons, Edinburgh
- Now in 2021, James is currently doing a PG diploma in Aesthetic and Restorative Dentistry



**SCAN ME...**

to explore the exam board specification





# Business



## *Empowering Future Leaders*

The A Level Business course introduces you to all you need to know about the internal and external business environment, providing a solid foundation for further study. With a focus on decision making, you'll learn essential managerial skills, alongside techniques to help you become an analytical problem solver capable of reaching clear judgements. These skills are all highly sought after and valued in a wide range of careers.

In year 12 students will explore the key business functions: marketing, operations, finance and human resource management in the context of real business situations. This includes a specific focus on leadership and decision making – particularly the interdependent nature of decision making. In year 13 students will go on to develop their understanding of strategic decision making processes undertaken by businesses across the globe.

The course prepares students for university courses such as business, management, accountancy, marketing, economics and law. The skills and knowledge you learn are also transferable across a broad range of subjects and careers. Whatever you choose to do in the future, you'll find that the things you learn in this course will help.

**Exam Board:** AQA

**Assessment:** Three two hour synoptic written exams taken at the end of the two year course.

**Subject Entry:** Minimum of 5 in GCSE Business if taken; 5 or above in GCSE English.

### ***Why not join our Career Ready programme too?***

An additional opportunity outside of lessons, Career Ready offers exceptional links with the business community and expert industry mentors! Career Ready empowers young people by connecting them with the world of work, providing workplace experiences, career insights, and a network of support.



**SCAN ME...**  
to explore the  
exam board  
specification



The Hinckley  
SIXTH FORM



# Chemistry



## *Fascinating and Far Reaching*

A Level Chemistry is a challenging subject that requires a variety of skills. You'll develop analytical techniques, discover what is in a chemical, and try out industrial processes. Some topics build on GCSE work, while some are completely new.

The A Level Chemistry course covers:

- **Physical Chemistry**
  - kinetics and thermodynamics
- **Inorganic Chemistry**
  - the elements and how they react
- **Organic Chemistry**
  - carbon and the molecules made from carbon.

Chemistry combines well with Maths and other science subjects requiring logical thinking skills and problem solving approaches. A Level Chemistry is an essential qualification for anyone wanting to study medicine, dentistry or veterinary science.



**Exam Board:** AQA

**Assessment:** End of course examinations, and ongoing assessed practicals.

**Subject Entry:** General Hinckley Sixth Form entry requirements, plus 6/6 in higher tier Combined Science or 6 in two single science GCSEs, including Chemistry. GCSE Maths grade 6.



**SCAN ME...**

to explore the exam board specification



The Hinckley  
SIXTH FORM





# Computer Science



Computer Science is a practical subject, where you'll apply academic principles learned in the classroom to real world computer systems. It is a creative subject that combines invention and excitement.

You'll focus on programming and extend your computational thinking and develop the skills to solve problems, design systems and understand human and machine intelligence.

Computing works well with other logical and mathematical subjects, including sciences, Business and Economics.

It is an invaluable qualification for careers and university courses in the expanding world of IT, providing students with the IT and analytical skills valued by a wide range of employers and universities.

**Exam Board:** OCR

**Assessment:** is by end of year exams and a coursework task in year 13.

**Subject entry:** GCSE Maths at 6 or above, GCSE Computer Science at 5 or above if taken.



**SCAN ME...**

to explore the exam board specification



The Hinckley  
SIXTH FORM



# Criminology



WJEC Level 3 Diploma in Criminology is a qualification which combines elements of Psychology, Law and Sociology. It aims to explore all aspects of our contemporary criminal justice system, criminological theories, both contemporary and historical, and the processual stages from the crime scene to court room.

You'll consider wider issues of the way society as a whole approaches crime and punishment, and how this has changed, and indeed is constantly changing. Students will be encouraged to think critically, to engage in problem solving exercises, and to apply their skills and knowledge to practical criminal scenarios. The course is suited to students with enquiring minds and a willingness to study and think independently.

**"I enjoy Criminology because it has given me a greater understanding of crime in society and has helped me to consider the effectiveness of the Criminal Justice system. I find the real-life case studies really interesting because they show the real impact of crime."**

- Year 12 Student Quote 2021

**Exam Board:** WJEC

**Assessment:** Examination and teacher marked assessments in Year 12 and Year 13.

**Subject Entry:** General Hinckley Sixth Form entry requirements, plus 5 in GCSE English.



**SCAN ME...**

to explore the exam board specification



The Hinckley  
SIXTH FORM





# Drama and Theatre



*Become a Collaborative, Creative and Confident Practitioner*

A Level Drama and Theatre is a fantastic opportunity to develop performance, designer and directorial skills as well as developing an understanding of the theatre and the theory which underpins staging a play. You will be working collaboratively and practically putting theory into practice as you work towards performance or stage design projects. This course provides a balance of practical performing and reading, analysing and acting from recognised texts.

A Level Drama and Theatre offers an engaging and challenging route for anyone wanting to study performance at university or college as well as opportunities to develop invaluable skills in communication, collaboration and confidence for any future career or course of study.

**Exam Board:** Eduqas

**Assessment:** End of course written examination and school-based practical assessments.

**Subject Entry:** General Hinckley Sixth Form entry requirements.  
A GCSE qualification

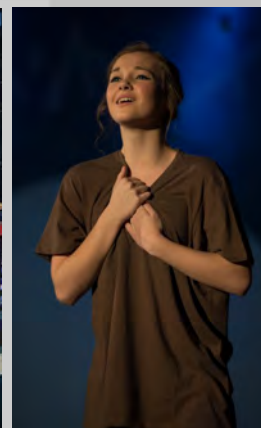


**SCAN ME...**

to explore the exam  
board specification

## **Alumni Story: Rebecca - Professional Performer**

"After completing my GCSEs and A Levels at The Hinckley Sixth Form, as well as partaking in the school musicals and arts concerts, I auditioned and was accepted onto the degree programme at the prestigious Bird College Conservatoire of Dance and Musical Theatre in London. I graduated from Bird College with a First-Class Degree in Professional Dance and Musical Theatre and began rehearsals for my dream job, a year contract touring round the theatres in the UK as well as International dates in Zurich and Berlin."

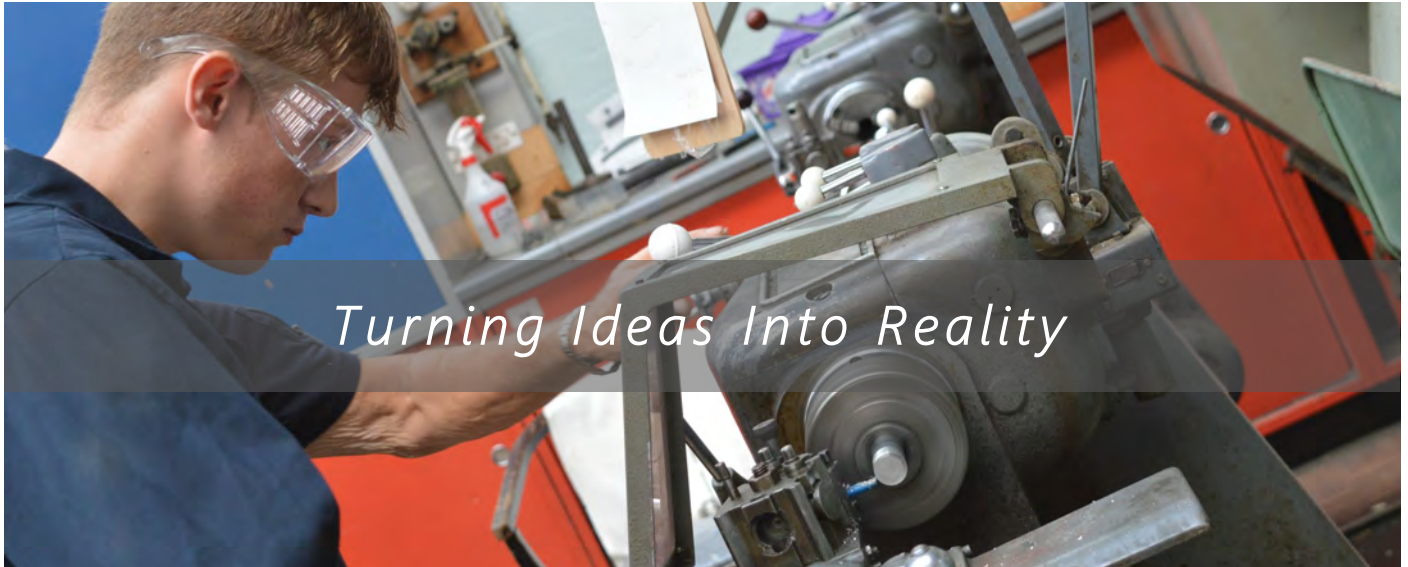


The Hinckley  
SIXTH FORM



The Futures Trust  
Building Brighter Futures

# Engineering



BTEC Engineering is a skills-based course, which will challenge you to design for real-world scenarios and applications and to explore how Engineering impacts on our world today. The course is designed to enhance your understanding of engineering practices, applications and working routines within the industry.

Engineering works well with Science and Maths courses to prepare you for Engineering courses at University or competitive higher-level apprenticeships. Its blend of theory and project-based learning means Engineering also combines well with other BTEC courses. Our students benefit from the use of unrivalled facilities, including computer suites, laser cutter, woodwork and metal work machinery.

Our students have gone on to study Engineering across the country and to take up exciting apprenticeship opportunities in vehicle, mechanical and machine engineering, as well as in robotics and design.

**Exam Boards:** Pearson—BTEC Level 3 National Extended Certificate in Engineering

**Assessment:** Exams in Engineering principles and Engineering design; plus six coursework tasks.

**Subject Entry:** General Hinckley Sixth Form entry requirements, plus 5 in a Science subject. 6 in GCSE Maths is preferred, 5 is essential.



**SCAN ME...**

to explore the exam board  
specification



The Hinckley  
SIXTH FORM





# English Language



A Level English Language takes you on a journey, from learning how we acquire language in infancy, to exploring how we use language as adults. You'll discover how factors such as gender and age impact on our language choices, studying how we speak and write in a wide variety of contexts. You will become confident at analysing all the finer details of written and spoken texts and have a deeper understanding of how writers and editors use language to communicate. English Language provides skills for any career that involves written communication and a confident grasp of the English language.



**SCAN ME...**

to explore the exam  
board specification

**Exam Board:** OCR

**Assessment:** End of course examinations and an independent coursework investigation.

**Subject Entry:** General Hinckley Sixth Form entry requirements, plus 5 in GCSE

# English Literature

If you love reading and analysing a range of literary texts, A Level English Literature is for you. You'll be taken on a literary journey through history, examining writing from the Middle Ages to the Elizabethan period, from a Victorian novel to texts written in the 21st century. You'll explore connections across these literary works, examining the contexts in which they were written and responding critically and creatively to their themes and ideas. A 'facilitating' subject, favoured by universities for a range of degree courses, English Literature is an important choice for careers in journalism, teaching, public relations, publishing, law and more.



**SCAN ME...**

to explore the exam  
board specification

**Exam Board:** Eduqas

**Assessment:** End of course examinations and one coursework task.

**Subject Entry:** General Hinckley Sixth Form entry requirements, plus 5 in GCSE English Language AND Literature.



The Hinckley  
SIXTH FORM



# Geography



While studying A Level Geography you will have the opportunity to study three physical units (Carbon and Water Cycle, Hazards and Deserts) and three human units (Changing Places, Globalisation and Global Governance and Population). Not only will each unit allow you to explore the ever changing world, but connections between the different units allow you to develop a holistic understanding of Geography.

The physical units, making up 40% of the overall grade, provide an insight into the natural world. With the current focus on changes to global climates, the study of the Carbon and Water Cycle provides an understanding of why this occurs, with a strong focus on river and rainforest environments. As part of the Hazard unit, we analyse the impacts of natural events, understanding what causes various tectonic and weather hazards and why impacts vary between developing and developed countries. The Desert unit allows students to understand how deserts develop and how they are impacting on life in various countries globally.

The human units, making up 40% of the overall grade, allow students to understand how we are impacting the planet. Urban areas are consistently changing and creating different challenges for different cultures and societies. Changing Places provides students with an insight into what is changing in urban areas and why, using local, national and international examples. Changing environments and political challenges in the developed and developing world mean our world needs to be governed to the best of our ability. Globalisation and Global Governance allows students to understand what caused our world to be interconnected, how our planet is governed and what areas are most at risk. The Population unit focuses on how the world is changing regarding its demographics and what factors are influencing population structures around the world.

Coursework makes up 20% of the overall grade, giving students an opportunity to explore an environment in the UK and create their own investigation, providing an insight into one of the six units in more detail. Geography at The Hinckley Sixth Form provides students with the opportunity to be independent thinkers and inspires those interested in how the world works, to focus on what is required to make our planet sustainable and to discuss issues and challenge problems facing our planet.

**Exam Board:** AQA

**Assessment:** End of course examinations, including multiple choice and written answers, and coursework.

**Subject Entry:** General Hinckley Sixth Form entry requirements, plus 5 in Geography or another Humanities subject preferred.



**SCAN ME...**  
to explore the  
exam board  
specification



# Health and Social Care

## **Alumni Story- Natasha - Paramedic Science**

"After leaving sixth form, I moved to Stafford as I received an unconditional offer at Staffordshire University to study Paramedic Science. Even though I didn't study a Science subject I was able to get in because of doing Health and Social Care at The Hinckley Sixth Form. In most of my coursework pieces for each subject I received a Distinction and even did an extended course for CPDL to get more UCAS points and show my willingness to learn."

My advice for future Hinckley Sixth Form students would be to, "just keep your head focussed on what you want to achieve. If you put the hard work in you will get there."



Our Students Achieve Amazing Things Every Year

BTEC Health and Social Care is a vocational qualification that relates to all aspects of health and social care in the UK. The programme prepares you to pursue a career in health care, social care or childcare, giving you knowledge, understanding and skills to prepare for employment or further study.

The qualification incorporates topics relevant across the health and social care sector:

- Human Lifespan Development
- Working in Health and Social Care • Meeting Individual Care and Support Needs.

Health and Social Care explores similar themes to social science subjects such as Psychology and Sociology, but with a vocational focus. After this qualification, students can progress directly into employment or on to higher study.

**Exam Board:** Pearson

**Assessment:** Course work and examinations in both Year 12 and Year 13



**SCAN ME...**

to explore the exam board specification

"I am passionate about my Health and Social Care lessons as they are always different and interesting. I have learnt about a range of professionals and organisations and how they support people in our community. I have also gained a range of skills, including research, organisation and time management that will be useful in the future."

**- Shannon, Class of 2020, now completing a degree in Nursing with Registration (Child Nursing)**



The Hinckley  
SIXTH FORM



# History

"A-Level History provides you with the skills you need to analyse the past in order to prepare for the future."

*- Max, Hinckley Sixth Form Alumni—Now studying for a degree in Politics and Modern History*

A Level History is an interesting and challenging subject that analyses change and continuity in human societies, helping students to develop an enquiring and analytical mind. During the course students study two units, complete one coursework assignment and produce a historical investigation into the origins of the French Revolution. 'Industrialisation and the People: Britain, 1783-1885' is our breadth study. Through exploring social, economic and political aspects of the age, the study aims to show how modern Britain was forged.

For example, it examines developments in politics and foreign policy at a time when government was changing to become something we would largely recognise today and encompasses protest movements to widen the franchise and covers the development of Irish nationalism. The coursework element centres around analysing historians' differing views of change or action, and deciding which are most convincing.

'The American Dream: Reality and Illusion 1945—1980' is our depth study. It covers the administrations of 7 presidents, from Truman to Carter and considers their impacts both domestically and abroad. This was a period of turmoil and change in the USA, from post-war recovery and boom, through the civil rights protests and a foreign policy that sought to establish American values across the world. Students will look at key events like the Cuban Missile Crisis and the quagmire that was the Vietnam War, alongside the growth of feminism and the Black Power movement.

Former Hinckley Sixth Form students have gone on to further study in areas such as History, Politics and Law, including at Oxbridge Universities. The ability to communicate effectively both orally and in writing is developed throughout the course and is useful for all further study routes and careers.

**Exam Board:** AQA

**Assessment:** End of course written examinations and a coursework essay.

**Subject Entry:** General Hinckley Sixth Form entry requirements, plus 5 in GCSE History, and 5 or above in English.



**SCAN ME...**

to explore the exam board specification

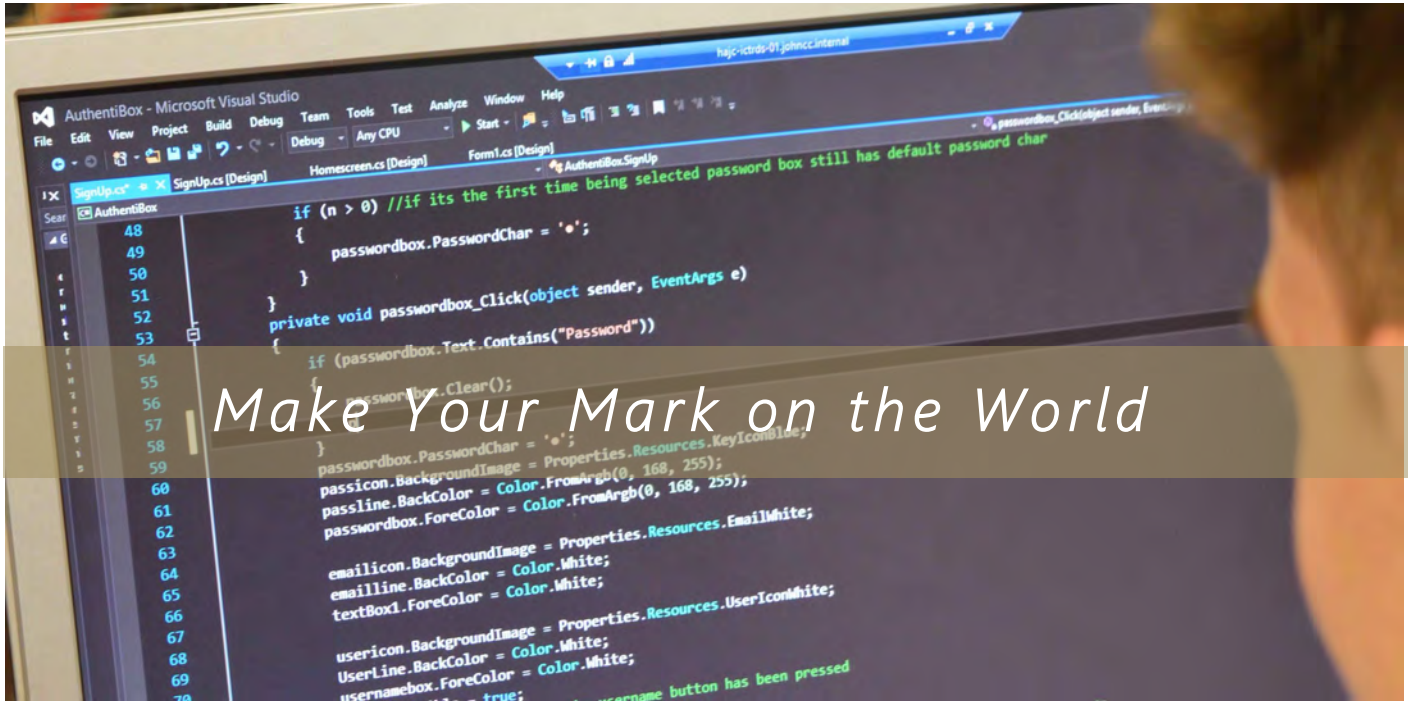


The Hinckley  
SIXTH FORM





# Information Technology



*Make Your Mark on the World*

By studying IT BTEC you'll explore a subject at the core of our everyday lives, developing your understanding and skills in data processing for business as well as using IT to communicate and share information.

You'll explore and develop your skills in creating and using databases, social media applications and websites. The extended certificate in IT complements any Level 3 subject.

IT BTEC students become active researchers, independent learners and skilled users of information technology, providing them with skills which can be utilised in a wide range of jobs and which are of real value on courses of further study.

IT is a central component of industry today and the skills learnt during the IT BTEC course help to set students up for success in roles such as an IT/Network Technician, Software Developer, Data Analyst, Digital Marketer and Web Developer across a wide variety of sectors.

**Exam Board:** Pearson

**Assessment:** Coursework and examinations in Year 12 and Year 13.

**Entry requirements:** General Hinckley Sixth Form entry requirements.



**SCAN ME...**

to explore the  
exam board  
specification



The Hinckley  
SIXTH FORM



# Mathematics

Mathematics is a challenging and exciting course covering topics in pure mathematics, mechanics and statistics. You'll use and apply advanced mathematical techniques, learn to reason, interpret and communicate ideas mathematically, and also develop skills in solving increasingly complex mathematical problems. To fit a swiftly developing and fast paced world, the course emphasises the use of IT and software to help solve problems. Students will develop analytical skills and logic and add in a bit of creativity, giving them a set of skills which make them desirable for any job or university course.

***"My Maths teacher, Mr Wilkinson, encouraged me to do a Maths degree. My experience of A Level Maths and Further Maths at JC6 inspired me to continue my studies in this field, and the high quality of teaching allowed me to attain the entry requirements for the university of my choice."***

*- Isaac, Class of 2016, HMRC Graduate Programme*

**Exam Board:** AQA

**Assessment:** End of course examinations.

**Subject Entry:** General Hinckley Sixth Form entry requirements, plus 7 or above in GCSE Mathematics is advised, applications are considered with a 6.



**SCAN ME...**

to explore the exam board specification

In 2021 **2** JC6 students were awarded offers to study  
**Maths at The University of Oxford**

# Further Mathematics

Further Mathematics is an extension of the A Level Mathematics course which can only be studied by those already doing A Level Mathematics. It is a challenging qualification, which extends and deepens your knowledge and understanding in the areas of mechanics, pure and discrete mathematics. The subject is offered at JC6 as both a one year AS and a two-year A Level. The further Mathematics course is recommended as a fourth A Level choice.



**Exam Board:** AQA

**Assessment:** three exams at the end of Year 13 for A Level or two at the end of Year 12 for AS.

**Subject Entry:** Grade 8 or above in GCSE Mathematics.

**SCAN ME...**

to explore the exam board specification



The Hinckley  
SIXTH FORM





# Media Studies



*How are groups of people represented to us in the media? Is it morally right to make a film out of tragic events? Can the media be blamed for violence in society? How far does the media control our thoughts about issues in the world today?*

The A Level Media course will explore these and many other questions through contemporary and historical media texts from the UK and other parts of the world, and productions from outside the commercial mainstream. In this two-year course, you will study a wide range of different media industries via the texts they produce. Through this you will develop an understanding of how and why media texts are created, the theories that explain how they carry meaning, as well as the ways in which they may be interpreted by audiences. You will explore and debate how different groups are represented in society, discuss media coverage of key events, and consider their wider implications. As part of this study, you will explore a foreign language text, independent/alternative media and historical texts in addition to contemporary examples to develop your research, analytical and evaluative skills.

In Media lessons you will be encouraged to engage with a wide range of texts, developing skills of observation, critical analysis and personal reflection, as well as developing your creativity and practical skills in desktop publishing, film making and editing. You will have the opportunity to put your knowledge and understanding into practice via a coursework unit.

You will undertake tasks individually, in groups and sometimes as a whole class with discussion on a range of issues requiring you to think, question and challenge your own ideas, as well as critiquing the theories you have studied. You will also develop essay writing skills and research skills.

The communication, writing and critical thinking skills you learn on this course will be valuable to employers in any industry. Previous Media Studies students have gone on to work in areas such as: media research, public relations and marketing, journalism, publishing and new media development.

**Exam Board:** Eduqas

**Assessment:** A mixture of coursework tasks (30%) and examinations (70%).

**Subject Entry:** General Hinckley Sixth Form entry requirements, including grade 5 or above at GCSE English.



**SCAN ME...**

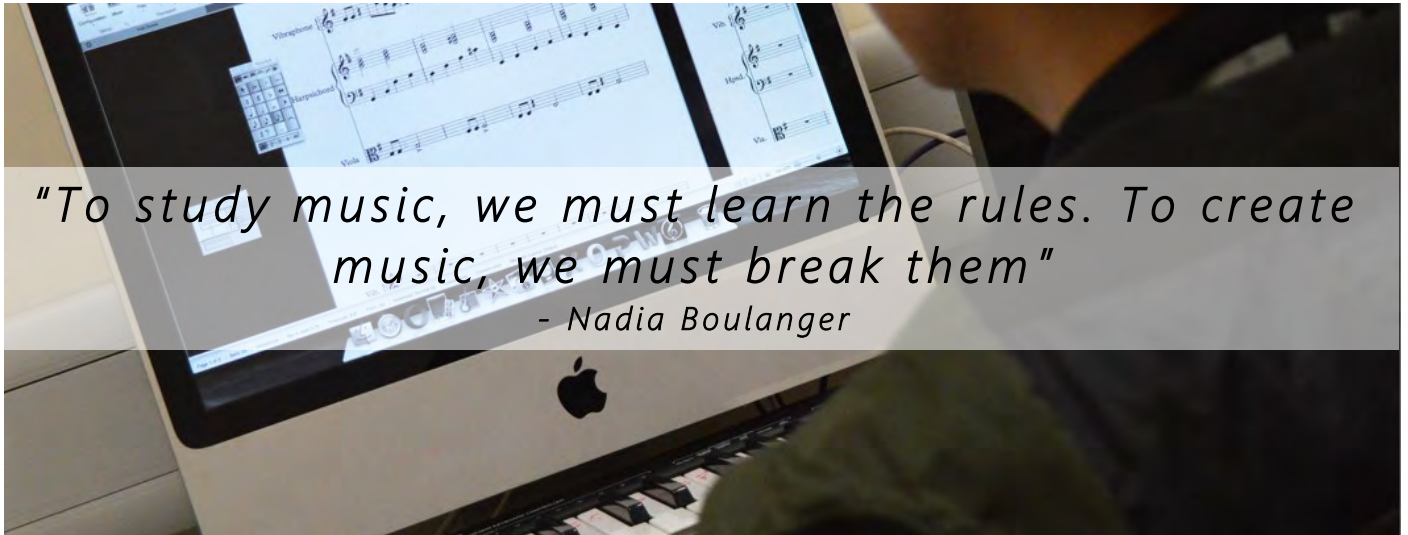
to explore the  
exam board  
specification



The Hinckley  
SIXTH FORM



# Music



BTEC music is a practical, creative and academic course which allows you the freedom to steer your own direction of learning whilst studying musical conventions, performances and the music industry. This course has breadth and depth, developing your skills as a performer, composer and musician.

Practical tasks include solo and ensemble contexts, developing your skills in rehearsing to prepare for a big performance. Composition tasks can be completed on the iMacs using Sibelius 7 or Logic Pro, integrating technological skills. The academic tasks require you to research, analyse and evaluate your own work and specific musical concepts. These can be assessed as articles, interviews or presentations.

BTEC music is an essential qualification for acceptance to a specialist performance programme at a music school or college or for anyone who wishes to pursue music as a career or a hobby.

**Exam Board:** Pearson - BTEC Level 3 Extended National Certificate in Music Performance

**Assessment:**

Unit 6: Solo performance

Unit 3: Ensemble performance

Unit 1: Notation, theory and harmony

Unit 2: Professional practice in the music industry

Within the two years, there will be a combination of articles, diaries, and written responses in exam conditions as well as recordings of performances, practice sessions, presentations, interviews, tutorials, and compositions.

**Subject Entry:** GCSE Music grade 4 pass or above and a keenness to perform on your instrument.



**SCAN ME...**

**to explore the exam  
board specification**



The Hinckley  
SIXTH FORM





# Photography



*Capturing Moments Forever*

An A Level course which enables you to develop your photography skills by experimenting with materials and techniques, working towards a personal investigation on an area or topic you are passionate about, and experimenting with a range of resources and image manipulation techniques.

At The Hinckley Sixth Form Photography and Art share a creative curriculum in Year 12, when students explore and develop a broad range of creative skills. In Year 13 you specialise, working with a tutor to further Develop your own distinctive style. Photography students have use of cameras, tripods, photography studio, computers and editing software, design classrooms and a dark room.



**Exam:** AQA

**Assessment:** is by coursework portfolio and end of course exam.

**Subject Entry:** General Hinckley Sixth Form entry requirements, plus Merit at Art Level 2 or 5 for GCSE. Please note, if you've not studied Art at Level 2 you'll need to submit a portfolio of work as evidence of your interest and skills.



**SCAN ME...**  
to explore the exam  
board specification



The Hinckley  
SIXTH FORM



# Physical Education



## **Alumni Story: Kim—Physiotherapy** *(JC6 Class of 2016)*

"I qualified from Leeds Beckett University in 2019 with a BSc Degree in Physiotherapy. I now work as a rotational band 5 Physiotherapist, securing my first job in a large teaching hospital in London.

Studying PE at A level allowed me to build the foundations of my anatomical knowledge, giving me a direct advantage into my first-choice university. PE opens up a wide variety of career pathways varying from the practical aspect to research. PE develops skills such as teamwork and problem solving, these transferrable skills can be used widely when applying for a job.

As a Physiotherapist I am now working on the frontline of healthcare for the NHS, providing patient-centred care. At times like this it has never been so rewarding."

Through the Physical Education course you will develop knowledge of both physiological and psychological theories within sport as well as learning about the impact of sport on current and historical society issues. You will study a range of topics including the causes and treatment of sports injuries, how personality and anxiety affect performance and how modern technology has impacted on 21st century sport.

The A Level PE course is a progression from GCSE PE, with topics explored in more detail as you progress into Level 3 study. The course features three exams and therefore course content can be defined into three distinct sections :

**Exercise Physiology** - Including the muscular, cardiovascular and respiratory systems, energy systems the body uses and exercise at altitude.

**Psychology** -Including theories of leaderships, personality and the impact of anxiety on athletes

**Social & Cultural** –Including the history of sport through to modern day, role of women in sport, media and commercialisation and global events.

This course is an excellent pre-requisite if you are considering studying sport at university or pursuing a future career within the sports industry. Hinckley Sixth Form students have previously progressed on to study Sports and Exercise Science, Sport Business Management, Sports Massage and Remedial Therapy, and Strength and Conditioning.

### **Exam Board:** OCR

**Assessment:** is in one practical area of sport, including a verbal analysis and evaluation of performance, and through a mixture of short answer and essay style exam questions in two end of course examinations.

**Subject Entry:** General Hinckley Sixth Form entry requirements, plus grade 5 or above in the GCSE PE theory paper or 5 in a GCSE Science.



**SCAN ME...**

to explore the  
exam board  
specification



The Hinckley  
SIXTH FORM





# Physics



A Level Physics enhances your understanding of the universe. It is a challenging, but inspiring course, ranging from the Newtonian concepts that govern the macroscopic world, down to the laws of Einstein that govern the microscopic.

You will further your knowledge in the topics of Kinematics, Electricity, Radioactivity, Simple Harmonic Motion and Cosmology. Physics at A Level will provide you with the opportunity to link your mathematics knowledge directly to physics concepts as evidence for their existence.

During your physics lessons you will be encouraged to 'think like a physicist'. This will involve designing and carrying out practicals in a professional manner to gather data. We will then ask you to critically analyse this data and use current theory to formulate conclusions. The many skills that you will develop in your physics lessons - such as problem-solving, critical thinking, numerical and communication—are transferrable to a wide range of careers. Hinckley Sixth Form Alumni students have gone on to further study in fields such as: Astrophysics, Architecture, Aeronautical Engineering, Veterinary Science, and even Town Planning.

You will undertake tasks in lessons individually and in groups where you are encouraged to work with your peers to discuss and challenge ideas. During the course, you have the opportunity to research a specific area of physics you are most interested in, and write a report demonstrating your understanding of the physics concepts that underpin it.

**Exam Board:** OCR

**Assessment:** is by end of course examinations and ongoing practical assessments.

**Subject Entry:** General Hinckley Sixth Form entry requirements, plus 6 in GCSE Maths.  
Minimum of 6/6 in Combined Science or 6 in two single science GCSEs, including Physics.



**SCAN ME...**

to explore the  
exam board  
specification



The Hinckley  
SIXTH FORM



The Futures Trust  
Building Brighter Futures

# Psychology



## *Study the Human Mind*

**“Psychology is an intriguing subject. Over the past two years I've covered many topics that I'm fascinated in and I have engaged in discussion of the mind and considered aspects I would never have thought about before.”**

**- Year 13 Student Quote 2021**

Psychology is the **scientific** study of the human mind and behaviour.

Ever wondered if prison really does change criminal behaviour? Or why some people conform? Or perhaps if the experiences you had before the age of five really do shape the person you are today?

A level Psychology aims to explore these questions through many different paradigms: biological, social, psychodynamic, evolutionary, cognitive, behavioural and humanistic.

You'll tackle thought-provoking topics such as memory, social influence, schizophrenia and forensic psychology. You will study a range of interesting research studies and consider the ethical issues involved in these.

You will learn how to carry out a scientific research project, interpret statistics and write a report.

Studying Psychology at university can give you a whole host of exciting career options, including, Marketing, Business development, Accountancy, Human resources, Forensic Psychology, Occupational Therapy, Clinical Psychology, Nursing, Teaching.

**Exam Board:** AQA

**Assessment:** is all through end of course examinations.

**Subject Entry:** General Hinckley Sixth Form entry requirements, including grade 5 in GCSE English and Maths. A higher pass grade in English is an advantage.



**SCAN ME...**

**to explore the  
exam board  
specification**



# Sociology



## Challenge Social Constructs

A Level Sociology involves studying human social life, groups and societies in a systematic way. Sociologists investigate and attempt to explain the social world and our behaviour in it.

They are particularly interested in understanding the ways in which society influences us and shapes our daily lives. However, be prepared to be challenged: sociologists fundamentally disagree on nearly every issue and the subject is characterised by intensive debate and perspective rivalry.

The course encourages you to develop a strong understanding of contemporary issues and debates. It is a good choice for a wide range of career and university routes, developing widely recognised skills: critical thinking, research skills and a sound understanding of the society we live in.

**Exam Board:** AQA

**Assessment:** is by end of course examinations.

**Subject Entry:** General Hinckley Sixth Form entry requirements including grade 5 in GCSE English.



**SCAN ME...**

to explore the  
exam board  
specification

**"Sociology has taught me to accept nothing and question everything."**

**-Amy, Hinckley Sixth Form Sociology student**



The Hinckley  
SIXTH FORM



# Uniformed Protective Services



An engaging course for those that are interested in working in the uniformed protective services sector such as the police service, the fire & rescue service, armed services and the prison service. It is also highly suitable for those who may also be interested in the ambulance service, social work and the probation/youth offending service.

It supports progression to higher education as part of a programme of study that includes other appropriate BTEC's or A Levels such as Criminology, Sociology, Psychology and Applied Science. This course reflects the shift towards increased degree level employment in the sector, for example within the police service.

Learners can also progress directly in to employment as the course will provide learners with the knowledge and understanding required to apply for a range of entry-level roles within the uniformed protective services sector, or for employment as an apprentice within the sector.

Providing the opportunity to develop transferable skills such as communication, teamwork, research and analysis, planning and completing tasks to high standards, the course is valued in both the workplace and higher education.

Units of study will include: Behaviour and Discipline; Teamwork, Leadership and Communication; an Introduction to Criminology and Police Powers and the Law.

*(Please note that until 2021 the Uniformed Protective Services course was titled Public Services)*

## **Alumni Story: Ellie - Professional Policing**

"The Public Services course prepared me for university, as what we learnt is now the focus of my studies. I gained an understanding which has had a huge benefit.

For example, all of the work around stop and search and PACE has become a huge part of my policing course and my understanding is so much clearer because of Public Services. The course is a mix of both individual and group learning which helps develop a variety of skills. The teachers have so much experience and it really shows, it makes learning much more enjoyable. I couldn't recommend a course more than Public Services. If you were thinking of joining the Police, like me, I highly suggest taking this course!"



Assessment: 25% External examination, 75% coursework  
Entry requirements: General Hinckley Sixth Form entry requirements.



**SCAN ME...**  
to explore the exam  
board specification



# Apply Now

Applications to join The Hinckley Sixth Form in 2022 officially open on Thursday 10<sup>th</sup> November!

To apply, visit our website - [www.thehinckleysixthform.co.uk](http://www.thehinckleysixthform.co.uk) and complete the online form.

To complete the application form you will need to enter contact details, predicted grades, select the courses you would like to study (*select 3 or 4 courses*) and will have space to explain why you would like to join The Hinckley Sixth Form. We encourage applicants to use this as an opportunity to also explain their interests, achievements and aspirations, this gives our team a real insight into who you are and how we can support your success over the next two years.

A member of our specialist team will then review your application before contacting you to arrange your Interview. This will be an informal meeting and gives our team the opportunity to get to know you better, discuss and advise you about your subject choices, as well as giving you a chance to ask any questions you may have about our courses and joining The Hinckley Sixth Form.

During your face to face interview you may be given a conditional offer, subject to achieving the entry requirements required for your chosen courses. *(Please note that we continue to follow government guidelines in relation to COVID-19 safety measures and interviews may take place online or via telephone if necessary.)*

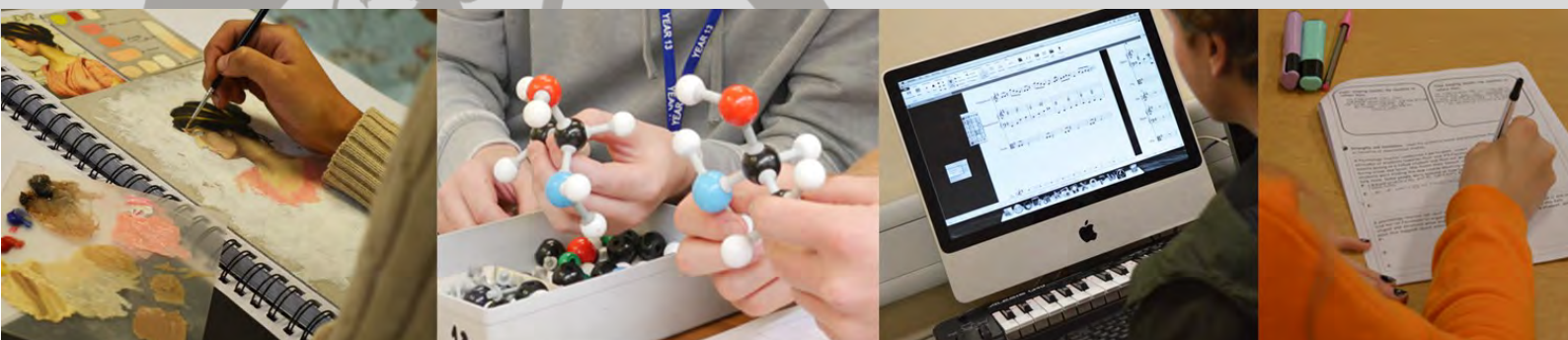
**The closing date for applications is Monday 28th February 2022**, however, places are limited and we encourage students to apply before January 2022 where possible. Any students interested in applying after the application closing date will need to email [office@thehinckleyschool.co.uk](mailto:office@thehinckleyschool.co.uk) to discuss their application with our team directly.

**If you require any support with your interview or application, please do not hesitate to contact The Hinckley Sixth Form team via telephone: 01455 632183 or email: [jhall@thehinckleyschool.co.uk](mailto:jhall@thehinckleyschool.co.uk) / [office@thehinckleyschool.co.uk](mailto:office@thehinckleyschool.co.uk)**

*(Please note that The Hinckley Sixth Form reserves the right to close courses where low levels of interest mean the course is not viable)*

Apply Online -

[www.thehinckleysixthform.co.uk](http://www.thehinckleysixthform.co.uk)



**Book a daytime tour of The Hinckley School to see our Post-16 Centre in action- Call [01455 632183](tel:01455632183) to book!**



Looking forward to seeing you soon at  
the Hinckley Sixth Form



The Hinckley  
SIXTH FORM

